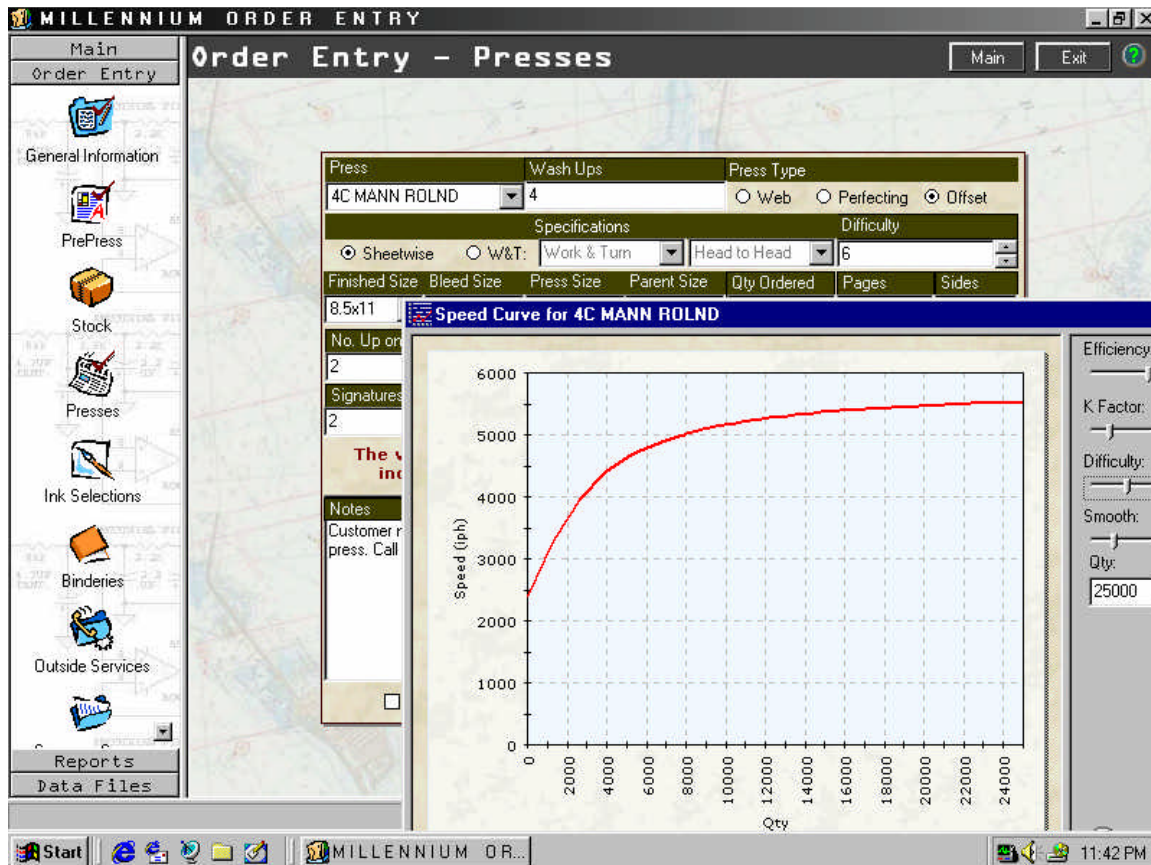


SPECIFICATION SHEET

Order Entry



Now you can completely specify those toughest jobs in just minutes with GraphiTech's new Millennium Order Entry system. The 8.5x14 Job Jacket prints in landscape mode and provides job specific details never before possible.

The above screen display identifies the Press Input section of our Millennium Order Entry Program. The press portion of the order may be completely defined and permits extensive notes for the job. For checking purposes, the Press Count and Stock Count (Press Size) is automatically calculated based on your input. So if you already know how much paper you will be using and the number of impressions, this feature can verify the accuracy of your input. And by clicking on the curve portion of the screen the user may manipulate the Efficiency, K-Factors and Difficulty settings of the desired press and/or bindery function. Modification of these curves

provides specific speed and spoilage information for those companies with the optional Order Entry Estimating.

The following shows Pre-Press input.

