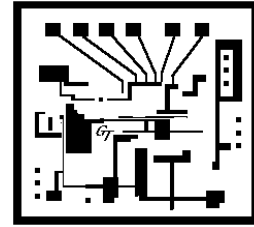


Specification Sheet

Invoicing Interface

A powerful invoicing interface that integrates seamlessly to KIS, QuickBooks or Infinity series of Accounting.



Invoicing Interface

Easy to Use Invoicing: The Invoice Interface retrieves data generated by GraphiTech's Estimator, Job Costing or Order Entry modules and posts the appropriate revenue, sales tax and freight to either a third party accounting program or to GraphiTech's KIS Accounting.

The Invoicing program posts data in an IIF format that QuickBooks is able to import and convert, whereas both Infinity and KIS use direct access to the database.

Distributions are auto created or manually entered on line by line basis. When the invoice is printed, it is posted to the appropriate file (identified as GT082206.iif for example), and then further posted to the Graphi-Tech Historical Ledger database as shown here.

Program includes the following:

Import Viewer: identify all data being transferred to the accounting program with provisions for modification or deletion.

Customer Import: Always maintain your customer, shipping and messages info correct by importing from QuickBooks. (Infinity & KIS are direct).

Historical Ledger: Instantly view

complete history of customer for every invoice created. Easily look up job number, invoice, PO, description, invoice date and more.

Ledger QuickBuild: Easily add data to your historical ledger without creating an invoice. Ideal for invoices that have already been created.

Invoicing: Prints on Pre-Printed forms and exports full Revenue, Sales Tax Payable, Freight and Accounts Receivable distributions. Also includes items such as Terms, Sales Rep, Ship Date, Shipping Company and Messages.

QuickBooks Import: Print a complete report showing items to be imported for verification, then Import with a single click. Items that are invalid are given a warning but may be imported anyway, as desired.

Instant invoicing: This is accomplished by importing data from Job Costing or Estimating. The invoice screen is then completely filled out. If multiple parts are assigned to a job number, then each line of the invoice will be automatically filled out with those parts.

The Millennium Accounting Interface is compatible with all versions of QuickBooks through 2013.

This program has been tested on the following operating systems: Windows 98, XP, Vista, Windows 7-32 & 64. To run this program on a Macbook Pro w/retina display, we recommend Bootcamp.

