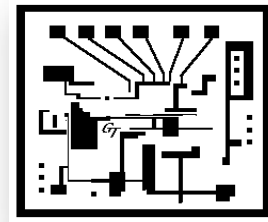


# Specification Sheet

## Job Costing & Tracking

GraphiTech's most powerful and accurate real-time data collection system with Bar Code Scanner(s), Touch Screen Input and Global Reporting.



TermSys Touch SFDC

**Real-Time Job Costing:** Job Costing is the process of including costs from all aspects of a job. From materials, labor, vendors, over-runs, multiple work input, alterations and more.

With the GraphiTech TermSys Touch SFDC system of Data Collection, the process of collecting that data is so simple, it is practically completed in minutes as opposed to the hours of manual data collection.

**Real-Time Job Tracking:** A side benefit of using GraphiTech's TermSys Touch SFDC system, is that you can determine the exact location of any job in the plant, including those in-process! Saves thousands Yearly.

**How Does Job Costing Work in the Plant?** On the right is a screen view of the start-up menu in which you select the terminal number to be used for this location (example might be pre-press or Fabrication of Parts) Once the terminal is selected, the actual data collection screen is displayed as shown below.



Click on Terminal Desired

Terminals in Red Have Been Left Open. Select A Red Terminal Number To Data. White Terminal Numbers are Available. If Terminal Missing, Elsewhere. In Emergency, Type Missing Terminal Number to Load.



**Each Data Collection Terminal** (as shown to the left), can be set up in each department and programmed to reflect the activity of that department (minimizes data entry).

**Start Shift:** As the employee starts their day, a simple scan of the Start Shift Icon (using the Bar Code Scanner shown) followed by a scan of



their Badge will automatically start their shift. As an alternative, when the employee logs into any job, that also will start their shift.

**Job Location.** Instantly identify current location of job as well as past activity with the touch of a button. Save hundreds of hours annually locating jobs, both in the plant as well as those "on-hold" at your Vendors', or remote plants. Includes Auto-Recovery in the event of loss of power.