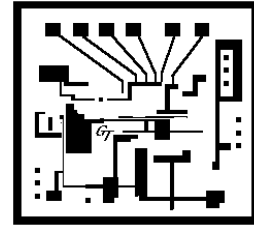


Specification Sheet

KeySys Hardware Pricing

GraphiTech KeySys Hardware includes either new or used 6x7 KeyPads with bar code scanner port, RJ45 connector, and custom faceplates.



KeySys Legacy SFDC

Powerful Data Collection: GraphiTech's Millennium and Legacy KeySys Hardware is a combination of rugged, industrial type Keypads with barcode reading capability that creates a virtually flawless real-time SFDC system.



Keypads: The Keypad is protected with a spill-proof membrane cover and contains provisions for sending messages, receiving messages, using hot keys, bar code input, entering of materials, and maintaining real-time verification of entered data.

KeySys keypads may be installed flat on a desk or attached to a wall or post using our acrylic and/or steel mounting brackets. A 2-line display of 24 characters each provides feedback for all data entry.



Bar Code Scanners: By utilizing Bar Code Scanners with your KeySys Keypads, we minimize employee errors during input. Each barcode is available for either KeySys or TermSys at a **cost of \$175 each.**

Used Keypads: An incredible bargain may be obtained by purchasing a group of four reconditioned KeySys keypads from GraphiTech. Each keypad consists of a bar-code port at top, a TMA1 connector to attach an RJ45 cable and new faceplate and spill-proof membrane. In addition, each unit has been thoroughly cleaned and tested and guaranteed for one year. See grouping above for typical condition of units. *Does not contain license or bar code scanner but may be purchased separately for \$100 and \$175 resp. Only \$1500 for 4 Keypads.*



New Keypads: A new GraphiTech KeySys Keypad consists of a bar code port at the bottom, a Bar Code Scanner (see above), dual in-line RJ45 ports at the top of the unit and GraphiTech's easy to use faceplate design and spill-proof membrane for use with the KeySys SFDC system. Each keypad includes a licence for use with each Keypad. **Price for one (1) Keypad is \$995.**



TNET Network Controller: The network controller and polling unit provides access to the keypads and the computer. It is the heart of the multi-drop network and contains four (4) RJ45 inputs to connect each Keypad, an RS232 serial cable to connect to the computer, an RS232 to USB converter, and a power supply to drive the network. One req'd. **Price is \$750 each.**



computer, an RS232 to USB converter, and a power supply to drive the network. One req'd. **Price is \$750 each.**

TNET Line Driver: This unit contains both an input and output port plus six (6) ports that drive additional keypads. One port is required of the Network Controller to drive the Line Driver. **Price is \$300 each.**

Item	Qty	Used	New	Item	Qty	Used	New
Keypads	1	\$675	\$995	Controller	1	---	\$750
Four Keypads	4	\$1500*	\$3980	Line Driver	1	---	\$300
License/Keypad	1	---	\$100	Bar Code Wand	1/keypad	---	\$175

*Requires a license for each keypad if purchasing for expansion or new system. Used pricing may also require Bar Code Wand.